

Why should I build my Organization Chart in Jalapeno?

Organization charts are important sources of organizational knowledge. Understanding the formal structure of the business provides insights about how the leaders view the business.

In Jalapeno the organization chart also drives the Business Unit Console. What you're able to see in this console is dependent upon the organization unit you are associated within your organization chart and the capabilities your organization unit has delegated to it.

Where can I find the Organization Chart in Jalapeno?

The organization chart functionality can be found in the Business Architecture module of Jalapeno.

How do I create the organization structure?

From within the "Manage Org Units" tab above the Jalapeno tree, create your organization structure using the Jalapeno tree to organize your organization units in the hierarchy in which they exist. If you're not sure how to create a hierarchy in a Jalapeno tree, refer to the Jalapeno Quick Reference Guides on Trees; <https://www.capsifi.com/categories/tree/>

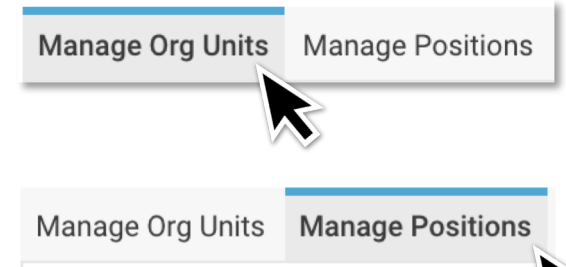
How do I add positions to my organization structure?

From within the "Manage Positions" tab above the Jalapeno tree you will find the positions grid from where you can add and manage positions within your organization. For more information about how to use Grids in Jalapeno, refer to the Jalapeno Quick Reference Guide on Grids; <https://www.capsifi.com/categories/grid/>

The position grid will require you to create a position name (usually a HR reference code), an optional description, the position holder (the employee who fills the position), the Owning Org Unit (the Org Unit the position belongs to), the Occupying Role (the Role or Title of the role that is utilizing this position), Reports To (the position which manages this position) and Manages (the Org Unit that this position is responsible for. This field is optional).

Business Architecture

- Capability
 - View and Model
 - Assess
 - Value Stream
- Products and Services
 - Products
 - Product Features
 - Offerings
 - Assess
- Application Portfolio
 - View and Model
 - Assess
 - System
 - Component
- Organisation
 - Manage Roles
 - Manage Skills
 - Organisational Structure
- Customer Definition
 - Stakeholders and Segments
 - Persona
- Customer Value
 - Value Proposition Whiteboard
 - Customer Journey
 - Customer Journey / Value Stream Analysis
- Assess Anything
- Concept Models
- Extend SP Meta Model



How can I view my Organization Chart?

The organization chart can be viewed as a standard organization chart by clicking on the “view” tab or as a map by clicking on the “map” tab.

For more information about the Jalapeno features available with maps, refer to the Jalapeno Quick Reference Guides about Maps; <https://www.capsifi.com/categories/map-tools/>

